

Tick the passive sentence:

- ☐ The storyteller performed the story.
- ☐ The storyteller was performing the story.
- ☐ The story was performed by the storyteller.



a

Can you think of the correct 'ie' words to match the definitions?

Someone in charge

A type of fuel

c

Choose a suitable preposition to complete each sentence:

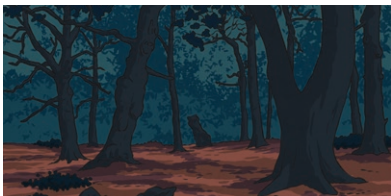
My baby brother is a nuisance and cries _____ night.

The fire alarm rang _____ lunchtime.

e

Add a co-ordinating conjunction and continue the compound sentence.

The trees seemed dark and foreboding _



b

Mr Whoops has got in a terrible muddle and has lost half of his hyphenated compound adjectives. Can you help him?

part-_____

cold-_____

d



f

What kind of punctuation is used to mark the parenthesis in the sentence?

The mysterious bottle that was found on an island - just off the coast of Mexico - contained a secret message.



Spring Term 1 Answers

5

Tick the passive sentence:

- ☐ The storyteller performed the story.
- ☐ The storyteller was performing the story.
- ☒ **The story was performed by the storyteller.**

a

Can you think of the correct 'ie' words to match the definitions?

Someone in charge _____

chief

A type of fuel _____

diesel

c

Choose a suitable preposition to complete each sentence:

My baby brother is a nuisance and cries _____ night.

e.g. at

The fire alarm rang _____ lunchtime.

e.g. during

e

The trees seemed dark and foreboding _____

Add a co-ordinating conjunction and continue the compound sentence.

Accept any sensible idea for a compound sentence containing a co-ordinating conjunction (FANBOYS), e.g. The trees seemed dark and foreboding but they knew it was the only way home.

b

Mr Whoops has got in a terrible muddle and has lost half of his hyphenated compound adjectives. Can you help him?

part-_____

e.g. part-time

cold-_____

e.g. cold-blooded

d

What kind of punctuation is used to mark the parenthesis in the sentence?

The mysterious bottle that was found on an island - just off the coast of Mexico - contained a secret message.

dashes

f

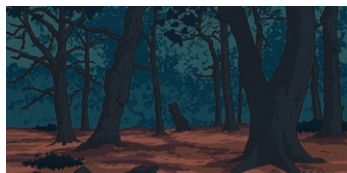
Rewrite this sentence in the passive voice:

The storyteller performed the story.



Add a subordinating conjunction and continue the complex sentence.

The trees seemed dark and foreboding _



Can you think of the correct 'ie' words to match the definitions?

Have faith in_____

To recover or get back_____

Mr Whoops has got in a terrible muddle and has lost half of his hyphenated compound adjectives. Can you help him?

part-_____

cold-_____

Could you use one of the words you have made in a sentence with a relative clause?



Choose a suitable preposition to complete each sentence:

My baby brother is a nuisance and cries _____ night.

The fire alarm rang _____ lunchtime.

My annoying sister talked _____ my favourite TV programme.

Can you mark the parenthesis in this sentence using dashes?

The mysterious bottle that was found on an island just off the coast of Mexico contained a secret message.



Spring Term 1 Answers

5

a
Rewrite this sentence in the passive voice:

The storyteller performed the story.

The story was performed by the storyteller.

c
Can you think of the correct 'ie' words to match the definitions?

Have faith in _____

believe

To recover or get back _____

retrieve

e
Choose a suitable preposition to complete each sentence:

My baby brother is a nuisance and cries _____ night.

e.g. at

The fire alarm rang _____ lunchtime.

e.g. during

My annoying sister talked _____ my favourite TV programme.

e.g. throughout

b
The trees seemed dark and foreboding _____

Add a subordinating conjunction and continue the complex sentence.

Accept any sensible idea for a complex sentence containing a subordinating conjunction, e.g. The trees seemed dark and foreboding as the frightened children entered the woods.

d
Mr Whoops has got in a terrible muddle and has lost half of his hyphenated compound adjectives. Can you help him?

part-_____ **e.g. part-time**

cold-_____ **e.g. cold-blooded**

Could you use one of the words you have made in a sentence with a relative clause?

e.g. Tony, who was a part-time waiter, struggled to pay his bills.

f
Can you mark the parenthesis in this sentence using dashes?

The mysterious bottle that was found on an island just off the coast of Mexico contained a secret message.

The mysterious bottle that was found on an island - just off the coast of Mexico - contained a secret message.

Rewrite this sentence in the passive voice. Underline the subject of your new sentence.

The storyteller performed the story.



a

Can you think of the correct 'ie' words to match the definitions?

naughtiness _____

succeed _____

c

Choose a suitable preposition to complete each sentence:

My baby brother is a nuisance and cries _____ night.

The fire alarm rang _____ lunchtime.

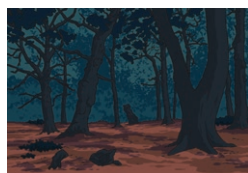
My annoying sister talked _____ my favourite TV programme.

Now, write a sentence that uses 'between' as a preposition.

e

The trees seemed dark and foreboding.

Improve this sentence by adding an opening subordinate clause.



b

Mr Whoops has got in a terrible muddle and has lost half of his hyphenated compound adjectives. Can you help him?

part- _____

cold- _____

Could you use both of the words you have made in a sentence with a relative clause?

d

Can you mark the parenthesis in this sentence using appropriate punctuation?

The mysterious bottle that was found on an island just off the coast of Mexico contained a secret message.

f

Spring Term 1 Answers

5

a

Rewrite this sentence in the passive voice. Underline the subject of your new sentence.

The storyteller performed the story.

The story was performed by the storyteller.

c

Can you think of the correct 'ie' words to match the definitions?

naughtiness _____

mischief

succeed _____

achieve

e

Choose a suitable preposition to complete each sentence:

My baby brother is a nuisance and cries **e.g. at** night.

The fire alarm rang **e.g. during** lunchtime.

My annoying sister talked **e.g. throughout** my favourite TV programme.

Now, write a sentence that uses 'between' as a preposition.

e.g. The hairdressers is between the butcher's shop and the pharmacy.

b

The trees seemed dark and foreboding.

Improve this sentence by adding an opening subordinate clause.

Accept any sensible idea for a complex sentence containing an opening subordinate clause, e.g. As the frightened children entered the woods, the trees seemed dark and foreboding.

d

Mr Whoops has got in a terrible muddle and has lost half of his hyphenated compound adjectives. Can you help him?

part-_____ **e.g. part-time**

cold-_____ **e.g. cold-blooded**

Could you use both of the words you have made in one sentence with a relative clause?

e.g. Tony, who was a part-time zookeeper, looked after the cold-blooded animal enclosure.

f

Can you mark the parenthesis in this sentence using dashes?

The mysterious bottle that was found on an island just off the coast of Mexico contained a secret message.

Accept the parenthesis (aside of information) demarcated with either commas, brackets or dashes, e.g. The mysterious bottle that was found on an island - just off the coast of Mexico - contained a secret message.